

RESOLVE HERCULES TUG



55 TBP ASD TUG
1/2 - FiFi w/Water Curtain

MAIN PARTICULARS

Length, Overall	98.4 ft	30 m
Beam	34.5 ft	10.5 m
Draft, Extreme	12.77 ft	4.20 m
Depth Moulded:	16 ft	4.90 m
Deadweight:		229t
Bollard Pull:		55 TBP

MACHINERY

Main Engines:	2 x NIIGATA 6 LX 28 HX
Output:	2 X 2,218 HP/750 RPM
Propulsion:	2X NIIGATA Z 31 with Azimuth fixed pitch Z drive
Propeller diameter:	2250mm
Aux engines:	3 x Caterpillar C4.4 DITA, Type 2436/1500
Power:	3 X 126 KVA - 380V/3 phase/50 HZ, 220V/1 phase

CAPACITIES

Fuel Capacity (Useable):	39000 USG/147m ³
--------------------------	-----------------------------

PERFORMANCE assuming fair weather

Free running:	About 12 Knots
Economical:	About 8 Knots

Fire Fighting Equipment ½ - FiFi with water curtain

Engine Driven Fire Pump:	1,400 M ³ /H
Fire Monitors:	2 x 600M ³ /H

ELECTRONICS / COMMUNICATIONS

Fully fitted with modern navigation equipment (with redundancy)
GMDSS installation for worldwide trading
FBB voice calling

ACCOMODATIONS

Standard Crew:	3, Coastal <200NM 7 crew & Unlimited Navigation Crew 8
Certified to carry :	11 persons
Cabins:	1 x 1, 1 x 2, 2 x 4

TOW & ANCHOR HANDLING

Make:	MacGregor Electro hydraulic deck machinery
Aft:	Single drum winch, tow wire 44 mm dia, length 700 meters, BHC 120t
Fwd:	Anchor and Tow Winch with 150 m Amsteel Blue Synthetic line, BHC 120t

SPECIAL EQUIPMENT

Deck Crane:	Palfinger PK 8500 TM, SWL 3060kg at 2m, 890kg at 7.1m
RHIB:	Capacity 4 persons, engine 25 HP Yamaha F25L WHC

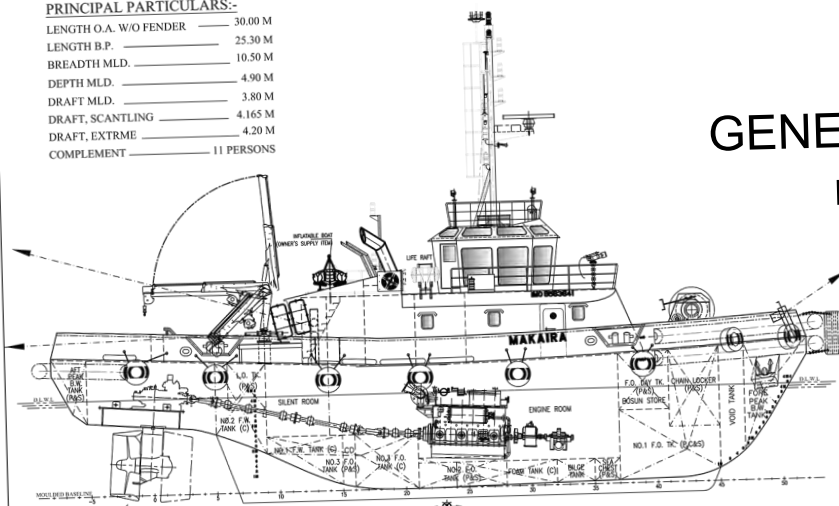
Suited for Worldwide emergency response/salvage and harbor towage

REGISTRATION

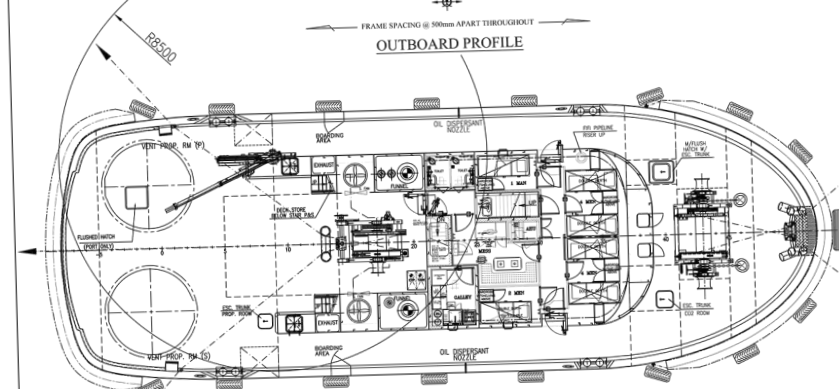
Flag	Gibraltar
Home Port	Gibraltar
Build Date	2011
Call Sign	ZDQZ8
IMO Number	9563641
Builder	KEPPEL SINGMARINE SHIP YARD, SINGAPORE
Hull number:	H354
Tonnage GRT/NRT:	335/100
Class:	Bureau Veritas
Class number:	BV26854 R
Class notation:	I ✱ HULL ✱ MACH Tug Unrestricted Navigation

PRINCIPAL PARTICULARS:-

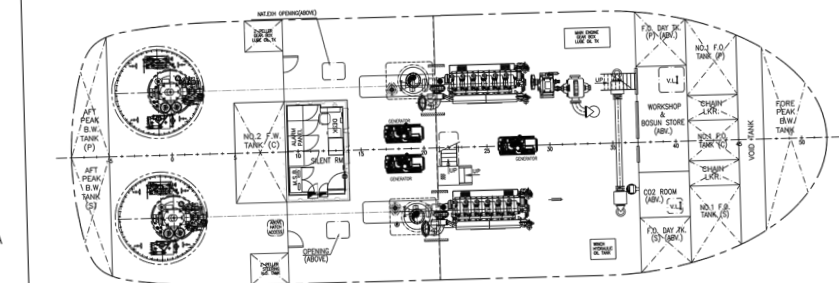
LENGTH O.A. W/O FENDER	30.00 M
LENGTH B.P.	25.30 M
BREADTH MLD.	10.50 M
DEPTH MLD.	4.90 M
DRAFT MLD.	3.80 M
DRAFT, SCANTLING	4.165 M
DRAFT, EXTRME	4.20 M
COMPLEMENT	11 PERSONS



OUTBOARD PROFILE



MAIN DECK



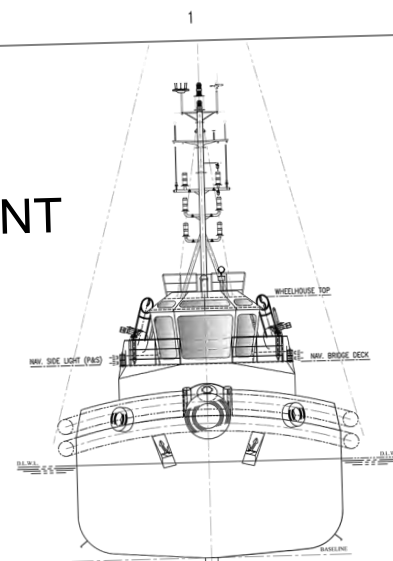
BELOW MAIN DECK

Keppel
Marine Technology Development
MTD 3055ST

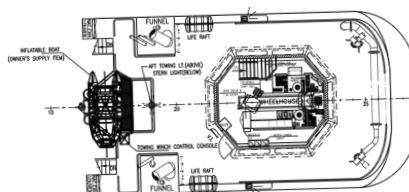
GENERAL ARRANGEMENT

m.t. "R Hercules"

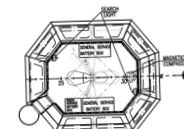
IMO:9563641



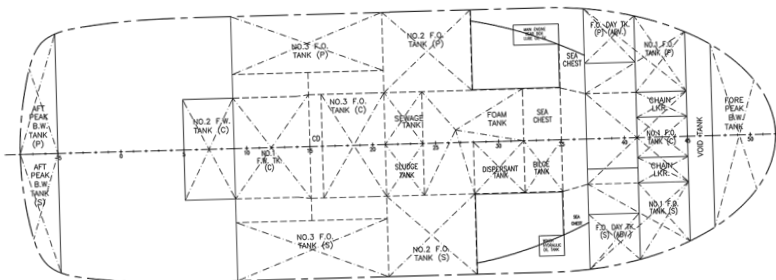
FRONT VIEW



NAV. BRIDGE DECK



WHEELHOUSE TOP



TANK PLAN

CLASS NOTATION:

LR +100A1 Tug + LMC Unrestricted Service
(Fire Fighting & Oil Pollution Control)

ALTERATIONS

REV.	AMENDMENT DETAILS	DATE	BY	PCN
0	"AS BUILT"	10/09/11	KSM	APR 11

REFERENCE PLANS

REF.	DWG/DOC NO	DRAWING/DOCUMENT TITLE	BY

This document and the information which it contains are confidential and are the property of Keppel Singmarine Pte Ltd. It is loaned to you for the limited purpose of assisting you with operation and maintenance of the equipment which you have purchased from Keppel Singmarine. It remains the property of Keppel Singmarine. It may not be reproduced in whole or in part without Keppel Singmarine prior written consent. It may not be disclosed to persons not having need of disclosure for the loan and it is to be returned to Keppel Singmarine upon completion of the use for which it was loaned.

PRINT RECORD

C : CONSTRUCTION	I : INFORMATION	A : APPROVAL
NO PRINTED		
DATE PRINTED		
ALTERATION		
OWNER		
CLASS (LRS)		
PROJECT MANAGER		
PROJECT SUPT.		
PRODN. (HULL)		
PRODN. (OUTFIT)		
PRODN. (ACCOM)		
PRODN. (MECHANICAL)		
PRODN. (PIPING)		
PRODN. (ELECTRICAL)		
PLANNING DEPT.		
PURCHASING DEPT.		
Q.A. DEPT.		
ENGINEERING DEPT.		
HULL/OUTFIT		
MECHANICAL/PIPING		
ELECTRICAL		
PROJECT ENGINEER		
VENDOR		
CONSULTANT		

APPROVED BY : _____ DATE: _____
OWNER _____
CLASS (LRS) _____

LR * 100A1 TUG * LMC UNRESTRICTED SERVICE
(FIRE FIGHTING & OIL POLLUTION CONTROL)

Keppel Singmarine

Keppel Singmarine Pte Ltd
15 Benoi Road
Singapore 629888
Tel: (65) 6861 6622
Fax: (65) 6860 2863

Date: 21st SEPT. 2010	Scale: 1:100 @ A1
Designed By: MTD	Hull No.: H354
Drawn: TUN	Eng. Proj. No.: 6354
Checked: PHILIP KOH	Basic Design App'd: PHILIP KOH
Job: 55 TONNES BOLLARD PULL ASD TUG	
Title: GENERAL ARRANGEMENT	
Drawing No: H354-D100.01 (AS BUILT)	Rev. 0
Sheet 1 of 1 Sheets	