

RESOLVE BLIZZARD

144T BP



229' AHT

MAIN PARTICULARS

Length, Overall	229.3 ft	69.9 m
Beam	52.2 ft	15.9 m
Depth	26.3 ft	8.0 m
Maximum Draft	22.6 ft	6.89 m
Deadweight		2500 t

CAPACITIES

Fuel Oil	1100,21 cbm
Ballast Water	1288,25 cbm
Fresh Water	325 cbm
Recovered Oil Capacity	1011,27 cbm

MACHINERY

Main Engines (2)	2 MAK 8M35
Horsepower	12000 HP
Propellers (2)	Controllable pitch propellers of Kamewa make in nozzles Diameter 4.00m
Thrusters	2 x Forward 1 x After Kamewa make 20 tonnes thrust
Bollard Pull (Rated)	144 t
Rudders	2 x Hinze, Flap Type
Shaft Generators	2 x 1050 kW, A. Van Kaick
Electrical Power On Board:	380V/50Hz/3Ph.
Auxiliaries:	1 x 500 kW Caterpillar Diesel
Emergency Generator:	1 x 80 kW Caterpillar Diesel

PERFORMANCE *Assuming Fair Weather*

Speed	
Maximum	About 14.0 knots on 25 ts gas oil/24 hrs
Economical	About 12.0 knots on 20 ts, 10 knots on 15ts 8 knots on 12 ts, In port 1.4 ts/24 hrs
Standby at Sea	abt 4 ts/24 hrs

ELECTRONICS / COMMUNICATIONS

Fully fitted with modern navigation equipment (with redundancy)
GMDSS - (A1+A2+A3)
SSB - 2 x Skanti TRP 8250 TXL, 1 x icom 1600E
V - Sat Global Coverage + FBB

TOW & ANCHOR HANDLING

Rauma Repola 4 drum winch-waterfall type	
AH Drum	Max Pull 250 mts and 400 mts static brake
	Anchor Winch Drum (PORT): 38mm x 92m
	Anchor Winch Drum (STBD): 44mm x 90m
Towing Drums:	Max Pull 250 mts and 400 mts static brake
	Tow Winch Drum (PORT): 70 mm x 940 m wire
	Tow Winch Drum (STBD): 64 mm x 1200 m wire
Pennant wire reel:	1 x 1000 m 57 mm wire each
Anchor Chain Whelps:	Various for 2.75" - 3.75" chain
Shark jaws:	1 x Triplex, SWL 300/350 t
Towing Pins:	2 x Triplex, SWL 200 t
Stern Roller:	1 x 5.5 m x 2.5 m diameter, SWL 400 t

ACCOMMODATIONS

Standard Crew	14 persons
Certified to Carry	24 persons
Berths:	24 + 2 (Hospital)
Fully Equipped Ship Hospital with Ebola Kits (5)	

FIRE FIGHTING SYSTEM

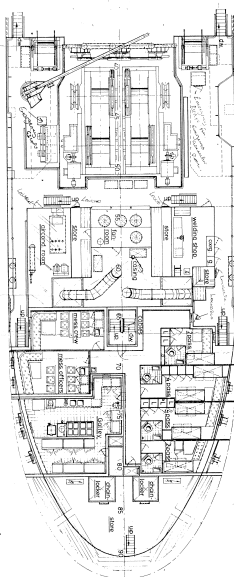
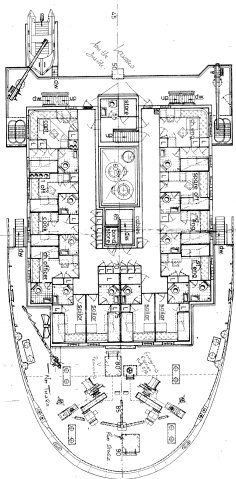
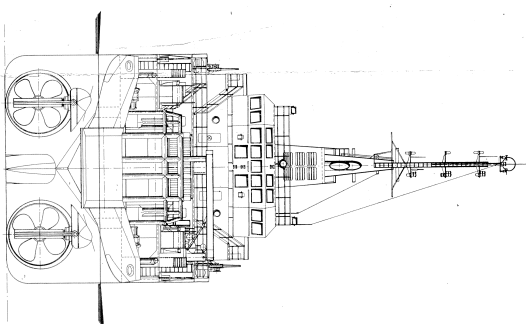
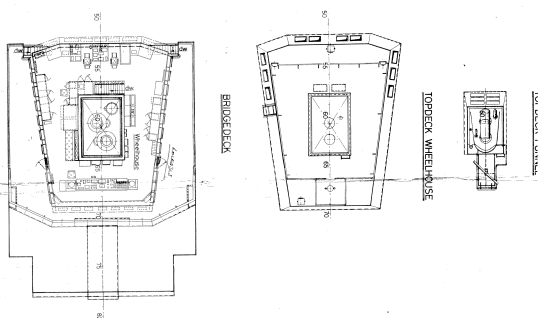
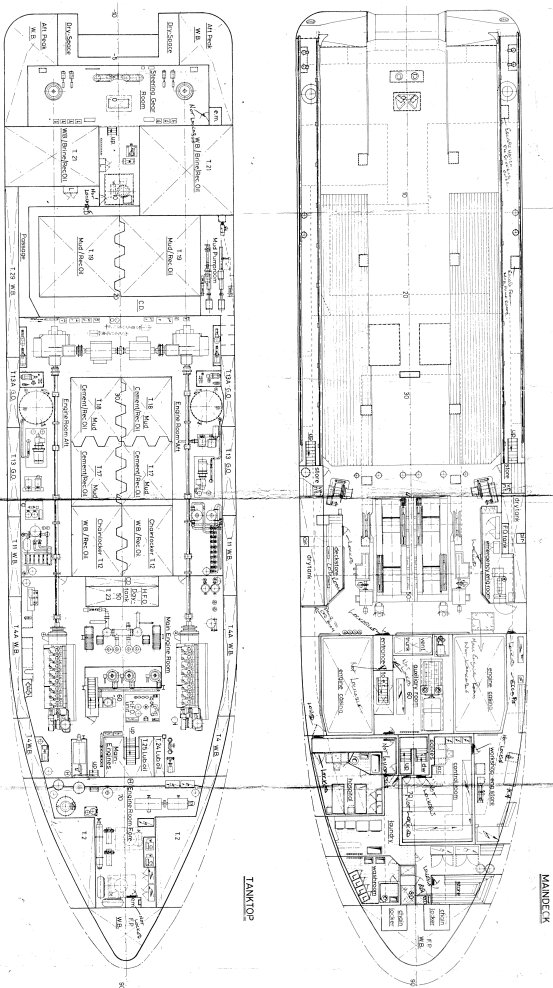
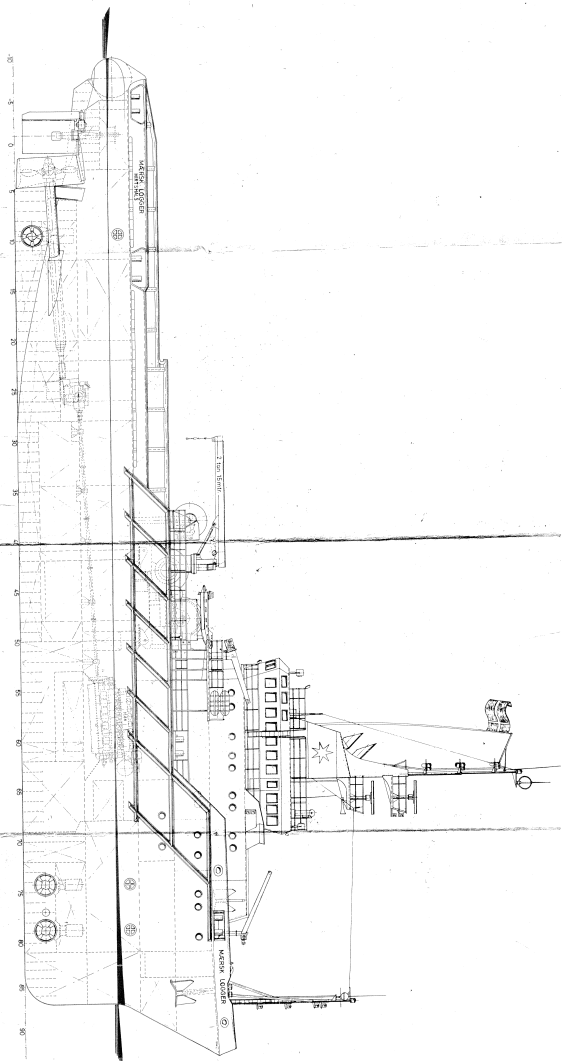
600 Cubics/ hrs with Fire Monitor

SPECIAL EQUIPMENT

Hydraulic Capstans (2)	6 t pull
Hydraulic Tuggers (2)	10 t pull
Hydraulic Crane (1)	SWL 5.4t at 10.58m Radius
Rig chain lockers: (2)	110m3

REGISTRATION


Flag	UK
Home Port	London
Official Number	920542
IMO Number	8516952
Call Sign	2IIB9
Builder	Pattje Shipyard
Hull Number	359
Tonnage GRT/NRT:	2311/693
Towing Service	Ocean Towing/Anchor Handling
Class	DNV



PRINCIPAL DIMENSIONS

	CA
LENGTH 0.2	6990 N
LENGTH P.P.	6060 N
BREASTH MLD	1550 M
DEPTH EXTREME	1623 M
DEPTH TO MAXIMUM	800 M
SUNNER DRAUGHT	620 M
DEADWEIGHT	24800 TON
BOLLARD PULL IN WELING TON	150 TON
SPEED AT DRAUGHT 13.0 M	16 KN

[illegible]INSPECTION: DIRECTORATE FOR STATING, SMITHS, SYDNEY

		<p>B. V. SCHEEPSWERF "WATERHUIZEN" J. PATTJE</p>	
<p>TELE. 0034-3414</p>		<p>TELE. 0034-3414</p>	
<p>GENERAL ARRANGEMENT PLAN FOR THE ANCHOR HANDLING TUG SUPPLY VESSEL</p>		<p>GRONINGEN HOLLAND</p>	
<p>ORDERING NO. 107496-3462</p>	<p>SCALE: 1:100</p>	<p>DATE OF ISSUING 1974-01-01</p>	<p>STATUS STATUS: EMB-1487</p>